

# Guidebook for Monitoring and Contingency Plan for the Spread of Covid-19 disease in the School



## **ACKNOWLEDGEMENT**

The “Guidebook for Monitoring and Contingency Plan for the Spread of Covid-19 Disease in the School” published by the Department of Health, Ministry of Public Health, September 2020.

The English translation of the” Guidebook for Monitoring and Contingency Plan for the Spread of Covid-19 Disease in the School” was prepared with care at the courtesy of Mr. Apivut Thongkam, Director of FBLP Legal Co. Ltd. , in collaboration with International Schools Association of Thailand (ISAT).

Permission for the translation was granted in November, 2020 by the Department of Health, Ministry of Public Health.

## Guidebook for Monitoring and Contingency Plan for the Spread of Covid-19 disease in the School

<b>ISBN</b>	978-616-11-4455-5
<b>1<sup>st</sup> Edition</b>	September 2020
<b>Quantity</b>	3,000 books
<b>Issued by</b>	Department of Health
<b>Advisors</b>	Permanent Secretary of the Ministry of Public Health Permanent Secretary of the Ministry of Education Secretary General of the Basic Education Commission Director General of the Department of Health Director General of the Department of Disease Control

### Editorial Staff

Dr. Sarawut Boonsuk	Deputy Director General of the Department of Health
Dr. Kittipong Saejeng	Medical Doctor, Advisory Level Productive Health, the Department of Health
Kadethip Supawanich, Ph.D.	Assistant Permanent Secretary of the Ministry of Education
Mr. Taweessit Jaihao	Director of Bureau of Inspection and Evaluation Office of the Permanent Secretary, the Ministry of Education
Mr. Chanwut Wongpeng	Director of Bureau of Integrated Educational Affairs Office of the Permanent Secretary, the Ministry of Education
Mrs. Panadda Janphong	Bureau of Health Promotion, Department of Health

(Unofficial Translation)

**Publisher** Office of Printing Affairs, the War Veterans Organization under the Royal Patronage  
2/9 Soi Krungthep-Nontaburi 31, Bang Sue District, Bangkok 10800

## Preface

Due to the increase of the severity of the Covid-19 epidemic around the world, especially in USA, India and Europe, including the spread of Covid-19 in Asia, especially in Myanmar, the second wave of epidemic of Myanmar is rapidly and widely occurring and the new infectious patients are continuously found up to hundreds per day. Moreover, the border area of Myanmar is bordered by 10 provinces of Thailand which are at risk for the spread of Covid-19 and may affect to school personnel and parents feeling frightened and worried, therefore requiring strictly and continuously compliance with Covid-19 control and prevention measures. Ministry of Public Health and Ministry of Education together with experts of networking partners had recognized and realized on the importance of the prevention of the Covid-19 spreading; therefore hereby provided **“Guidebook for Monitoring and Contingency Plan for the Spread of Covid-19 disease in the School”**.

We sincerely hope that school personnel, education department, and relevant parties will use this book as a guideline for prompt surveillance, monitoring, and preparing for the second wave of Covid-19 epidemic that may lead the students, school personnel and relevant people to be safe and able to live happily in the new normal.

Editorial Department

September 2020

## Contents

	Page
<b>Preface</b>	3
<b>Contents</b>	5
1. Introduction	6
2. Criteria for determining Covid-19 risks and surveillance	12
3. Contingency Plan for the epidemic situation of Covid-19	27
4. Monitoring and Evaluation	35
5. Practical Guideline for school closure during Covid-19 occurring	44
<b>Appendix</b>	
• The letter of Office of the Basic Education Commission, No. Sor. Tor. 04005/Wor.880 dated 15 July 2020 RE: Guidelines for Educational Institutions in case of Suspecting Students or Educational Institution Personnel of Having a Risk to Get Infected with Coronavirus (Covid-19)	47
• QR code: Name lists of the Inspector and Monitoring and Evaluation group	48
• Follow-up Form for Assessment on Learning and Teaching Management and Administration in accordance with the Preventive Measures During the Spread of Covid-19 Situation of the Ministry of Education and the Ministry of Public Health Semester 1/2020 (No. 3 September 2020)	49
• Practical Guideline according to Mitigation Measures of Affairs and Activities in order to Prevent the Spread of Covid-19 in Exercising Activities, Music Shows, Concerts, and Sports Competitions	53

# 1

## Introduction

### Covid-19 situation around the world

The situation report of confirmed Covid-19 infectious patients around the world, 211 countries, reported that there has a continuous increase in the severity of the epidemic spreading to many countries especially in USA, India, Europe including Asia having second-wave of Covid-19 epidemic which is widespread. At present, the number of confirmed cumulative Covid-19 infectious patients is 28,938,085 people, 924,558 deaths, 60,889 having severe symptoms. The countries which have the highest number of confirmed cumulative Covid-19 infectious patients are; the first is USA 6,676,601 people, 198,128 deaths, the second is India 4,751,788 people, 78,614 deaths, and the third is Brazil 4,315,848 people, 131,274 deaths. Thailand is hundred and twenty fifth of the world.



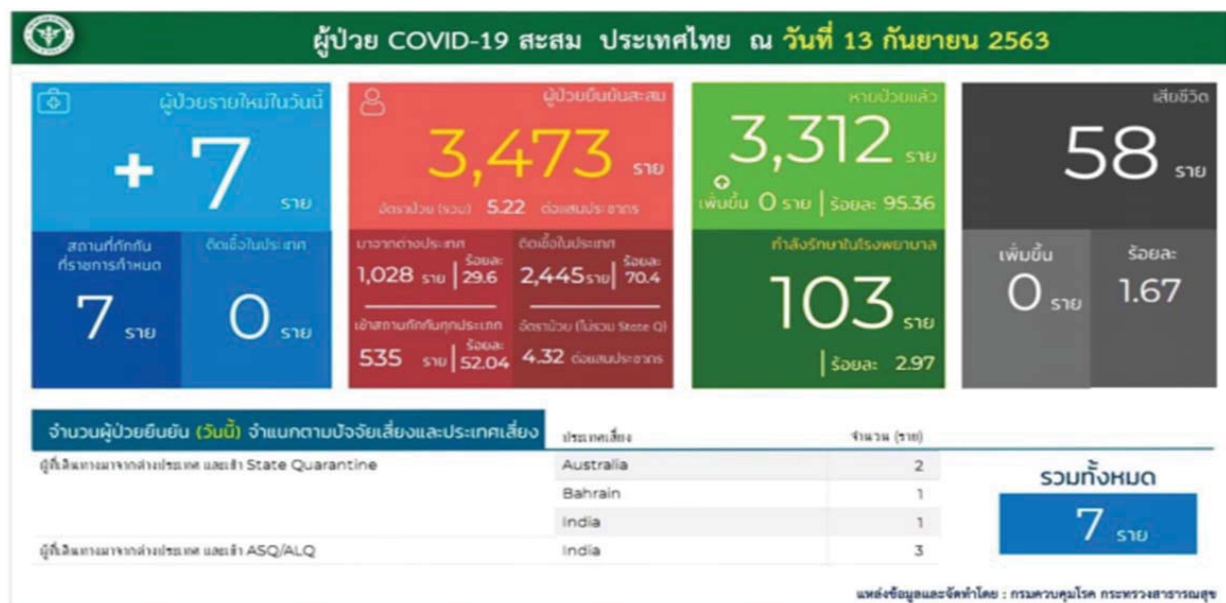
ที่มา : <https://ddc.moph.go.th/viralpneumonia/file/situation/situation-no240-300863.pdf>

The Asian country with the most infectious patients is India where found the new patients around hundred thousand people (94,409 people), almost thousand deaths per day (1,108 people). Myanmar has an area bordering Thailand and there found the second wave of Covid-19 epidemic at Rakhine. After that there is the severe spread of Covid-19 at Yangon finding the confirmed cumulative infectious patients 2,595 people, confirmed new infectious patients 173 people, 16 deaths.

## Covid-19 situation in Thailand

Thailand situation in controlling and preventing the spread of Covid-19 tends to continuously be better but the epidemic in the foreign countries is still severe and the number of new infectious patients is increased at a high rate. Due to the relaxation of the certain measures including the opening for traveling in the Kingdom from abroad according to the high number of Thai citizens and foreigners who are necessary to travel in the Kingdom and request the government. Therefore, the government is of the opinion that there is necessary to continue the Declaration of an Emergency Situation in order to make people can carry out the economic activities by being alarmed and following disease prevention measures and in order to have the benefit in the performance of the Competent Officer, which gathering all parties other than the Communicable Disease Control Officer according to the Communicable Disease Act B.E.2558. The one of the results of the gathering is the Competent Officers still find the high number of authorized person entering the kingdom and illegal immigrants who have the symptoms of illness and may be a carrier of disease spreading in Thailand.

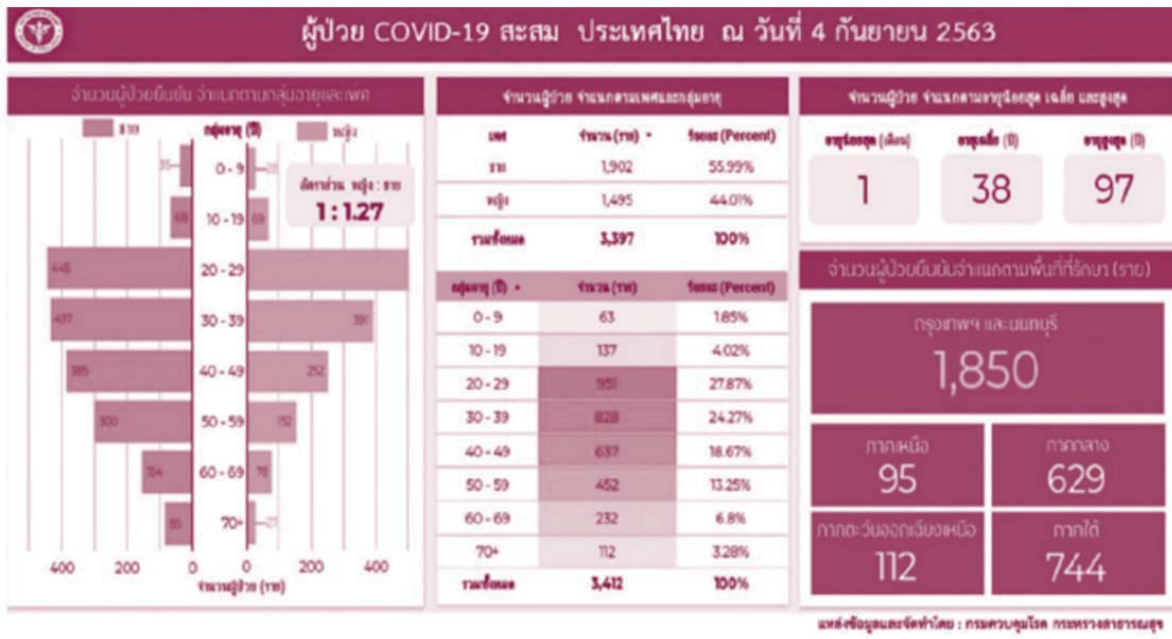
From the report of infection of Covid-19 situation in Thailand found that the number of confirmed cumulative infectious patients is 3,473 people, 58 cumulative deaths and not found new death, 3,312 recovered, infected in the country 2,445 people, in State Quarantine 535 people, hospitalized 103 people. There are 7 new confirmed cumulative infectious patients comprising of 1 Thai from Kingdom of Bahrain, 2 Thais from Australia, 1 Thai form India and 3 foreigners who travelled from India.





## Covid-19 situation in children

People of all ages can be infected with Covid-19. At present, the report of Covid-19 infection and death in children is low. Children are in the low risk group infecting the disease around 1-6% because children have less ACE receptor in respiratory organ causing Covid-19 germ harder to access to the body than adults. Statistic information of confirmed cumulative infectious patients in Thailand indicates that the number of infectious patients in 0-9 year old group is 35 boys and 28 girls totaling 63 people as 1.89 percent; in 10-19 year old group is 68 boys and 69 girls totaling 137 people as 4.02 percent. Found the latest child patient in April 2020 and never found Cluster in schools. Moreover, since school reopened on 1<sup>st</sup> July 2020, there is no spreading in schools.



Research information from China found that there is only 10 percent of Covid-19 Cluster that children are epidemics source while found that there is 55 percent of Influenza Cluster that children are epidemics source. Attending to school affects the development and nutrition in young children.

(Source: Information from Academic Committee, Communicable Diseases Act B.E.2558)

## Interesting foreign situation against the risk

On 27<sup>th</sup> August 2020, Centre for COVID-19 Situation Administration (CCSA) reported the information that the number of disease infectious people in Myanmar from the second wave of Covid-19 from 16<sup>th</sup> August is 580 people. Most infected people live in Sittwe, Rakhine where is the most critical place having the consecutive increased of cumulative infectious patients causing Myanmar has locked down Sittwe indefinitely from 27<sup>th</sup> August 2020 onwards.



In order to prevent the spread of Covid-19 in 10 border provinces with Myanmar (Kanchanaburi, Chumphon, Chiang Rai, Chiang Mai, Tak, Prachuap Khiri Khan, Phetchaburi, Mae Hong Son, Ranong and Ratchaburi), Ministry of Interior has issued the letter to Provincial Governor of aforesaid provinces to enjoin the involved agencies in the area to comply with additional actions as follows:

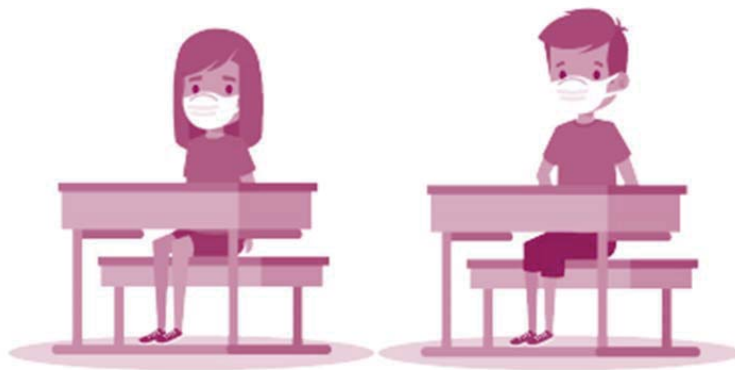
1. Entering the country through a border path of entry, a checkpoint, a cross-border or a relief point in a responsible area, shall strictly comply with the disease prevention measures and practical guideline for the traveler who entering into the Kingdom according to the order of CCSA.

2. Integrating of the involved agencies in the border area to patrol the illegal entering through Natural Border Path, in case find such action then shall strictly proceed according to

relevant regulation and law, and prescribed disease prevention measures of Ministry of Public Health.

The second wave of the spread of Covid-19 situation in Myanmar causes almost two thousand Covid-19 infected people and affects to some of border provinces are at risk of the spread of Covid-19 such as Mae Hong Son, where its border lines all along with Myanmar, thus shall strictly monitor. Mae Hong Son Provincial Communicable Disease Committee had a meeting for considering such situation and had a resolution to close all relief border trade points for 15 days counting from 3<sup>rd</sup> September 2020 onwards. Utterly prohibit all people, transports, and goods to in and out including all refugee camps in Mae Hong Son area. Patient, who lives in refugee camps, can normally go to city hospital or district hospital for medical treatment but in case found that having virus, then stay inside the refugee camp unless having severe symptoms then can go to the city hospital for medical treatment and all access points have the staff for closely monitoring and controlling.

Ministry of Education has enjoined the border schools to strictly comply with the prevention measures of Ministry of Public Health. Nevertheless, there are 3 border schools that already closed i.e. 1 border school in Kanchanaburi and 2 in Prachuap Khiri Khan by coordinating with Public Health Officer to assess the necessity of closing school. For other border schools, Ministry of Education has assigned Educational Service Area to coordinate with Provincial Center for Covid-19 Situation and Administration for further proceeding.



## 2

# Criteria for determining Covid-19 risks and surveillance

### Objective

1. For classifying the severity of Covid-19 epidemic.
2. For specifying national disease control and prevention measures
3. For provincial applying

Due to the ongoing of the spread of Covid-19 situation, there are specified criteria for determining severity of epidemic, risks and surveillance by classifying into 3 levels i.e. national level, community level and school level as follows:

### 1. Criteria for determining the severity of Covid-19 epidemic in National Level

Determination of the severity of Covid-19 epidemic in National Level should consider on the importance of Characteristics in 3 issues:

- 1) An amount of new cumulative infectious people per week
- 2) Characteristics of the spread of disease by province and health area
- 3) The spread of disease according to characteristics of epidemiology

In each issue, classifies the severity of Covid-19 epidemic into 5 colors. The details of characteristics are as follows:

**White (safe, with vaccine)** means has no people who are infected the infection from the inside of the country, has infected people who are infected the infection from the outside of the country, travelers from the foreign countries are in quarantine, and the infectious people receive medical treatment at specified hospital.

**Green (not severe, without vaccine)** means has people who are infected the infection from the inside and outside of the country, travelers from the foreign countries are in quarantine, and the infectious people receive medical treatment at specified hospital.

**Yellow (less severe)** means the number of new cumulative infectious people per week less than 300 people. Characteristics of the spread of disease by province and health

area is not exceeding 1 province per district and not exceeding 3 districts. The spread of disease according to characteristics of epidemiology is a limited epidemic which is not over 3 Cluster.

**Orange (moderate severe)** means the number of new cumulative infectious people per week is 300-900 people. Characteristics of the spread of disease by province and health area is not exceeding 1 province per district and not exceeding 4-6 districts or more than 1 province per district and not exceeding 3 districts. The spread of disease according to characteristics of epidemiology is a limited epidemic which is over 3 connected Cluster.

**Red (heavy severe)** means the number of new cumulative infectious people per week is over 900 people. Characteristics of the spread of disease by province and health area is not exceeding 1 province per district and exceeding 6 districts or more than 1 province per district and exceeding 3 districts. The spread of disease according to characteristics of epidemiology is a wide epidemic and cannot find causes.

**Criteria for determining the severity of Covid-19 epidemic in National Level**

Criteria for determining the severity	White (safe, with vaccine)	Green (not severe, without vaccine)	Yellow (less severe)	Orange (moderate severe)	Red (heavy severe)
<b>1. An amount of new cumulative infectious people per week</b>	Has no people who are infected the infection from the inside of the country. Has infected people who are infected the infection from the outside of the country.	Has people who are infected the infection from the inside and outside of the country.	Less than 300 people per week.	300-900 people per week.	More than 900 people per week.
<b>2. Characteristics of the spread of disease by province and health area</b>	Travelers from the foreign countries are in quarantine, and the infectious people receive medical treatment at specified hospital.	Travelers from the foreign countries are in quarantine, and the infectious people receive medical treatment at specified hospital.	Not over 1 province per district and not over 3 districts.	- Not over 1 province per district and not over 4-6 districts. Or - Over 1 province per district and not over 3 districts.	- Not over 1 province per district and over 6 districts. Or - Over 1 province per district and over 3 districts.
<b>3. The spread of disease according to characteristics of epidemiology</b>	Travelers from the foreign countries are in quarantine, and the infectious people receive medical treatment at specified hospital.	Travelers from the foreign countries are in quarantine, and the infectious people receive medical treatment at specified hospital.	Limited epidemic which is not over 3 Cluster.	Limited epidemic which is over 3 connected Cluster.	Wide epidemic and cannot find causes.

The Academic Committee has considered and specified the severity when the spread of disease was occurring. (Adjusted from the Academic Committee)

In case, the epidemic is occurring then will adjust the color level weekly according to the situation in that time.

Creator of Public Health

## 2. Criteria for determining the severity of Covid-19 epidemic in Community Level

From the risk situation of the spread of Covid-19 in the community place of Rayong that Egyptian Military Officers, who travelled with a military crew to Thailand, stayed in one of Muaeng Rayong hotels and reportedly screened Covid-19 from 31 Egyptian Military Officers and found one of them infected Covid-19. Such military crew went to the shopping mall near hotel. The situation, during 6-11 July 2020, made people in Rayong and near province panic about the infection and it affected to economy and society. Tourists and group seminar meetings cancelled almost all booking. Also it affected to education which made the parents feel worry and unconvinced on the risk situation that may affect to student safety during the semester. 274 schools in Rayong closed, thus Ministry of Public Health prescribed the criteria, for determining Covid-19 risks and surveillance in case the occurring of risk factors of family, community, or village member with connected school, for schools use it as the performing measures in accordance with the situation by classifying it in to 4 colors i.e. red, orange, yellow and green. The details are as follows:

**Red** means in case of having risk factors, has the patient 7 days in the community, family member close contact with the patient, the symptoms of patient family member is confirmed infecting Covid-19 thus the level of the risk is very high. The performing measures are students shall study at home for 28 days and schools shall strictly comply with the highest measures.

**Orange** means in case of having risk factors, has the patient 14 days in the community, family member has not closed contact with the patient, the symptoms of patient family member is waiting for the confirmation of Covid-19 infection thus the level of the risk is high. The performing measures are students shall study at home for 14 days and schools shall comply with the high measures.

**Yellow** means in case of having risk factors, has the patient 14 days in the community, family member went to the risk places or had risk behaviors, family member sick but does not infect Covid-19 thus the level of the risk is moderate. The performing measures are students shall study at home for 7 days and schools shall comply with the standard measures.

**Green** means in case of has no the patient over 28 days in the community, family member have no risk behaviors, thus the level of the risk is low. The performing measures are students can go to schools and schools shall comply with the relief measures.

Community and family assessment for prescribing the measures in the School

Risk factors		Risk Level	Performing measures	
Patient in the community	Family member		For children	For School
- Has patient in 7 days	- Close contact with patient	Very high	Study at home for 28 days	Highest measures
- Has patient in 14 days	- Does not close contact with patient			
- Has patient in 28 days	- went to risk places or had risk behaviors	Moderate	Study at home for 7 days	Standard measures
- Has no patient over 28 days	-has no risk behavior			
<p><b>Remark:</b> The risk factor has 3 main variables. In each variable has 4 divided variables, thus the risks has 12 levels. Can adjust the measures into 4 levels or as appropriate.</p>				



### **3. Criteria for determining the framework according to coordination schedule for managing Covid-19 situation in schools**

Determination of the framework according to coordination schedule for managing Covid-19 situation in schools classifies into 5 color levels i.e. white, green, yellow, orange and red (in accordance with criteria for determining the severity of Covid-19 epidemic in National Level). The details of the framework in each level and important businesses and activities relief levels are as follows:

#### **Level of managing situation: White level**

##### **Practice framework**

1. Can travel across the provinces.
2. Can conduct grouping activities but shall comply with prescribed disease prevention measures.
3. Can normally conduct all businesses or activities. Entrepreneurs or activity conductors shall set up the screening measurement for customers and shall comply with the main measures as follows:
  - Frequently clean the frequent touched surfaces.
  - Staff, employee, customer, and participant shall wear a mask.
  - Provide hand washing service points with soap or alcohol gel or disinfectants.
  - Control the amount of customers in order to prevent crowded.

##### **Examples of important businesses and activities relief levels**

- School can operate for teaching and learning at school 100%.
- Outdoor sport field can allow the audiences inside 70% / 50 % (5000).
- Indoor sport field can allow the audiences inside 50% / 25% (2000/1000).
- Public transport can carry the passengers 100%.
- Movie theatre can allow the audiences inside 100%.

## Level of managing situation: Green level

### Practice framework

According to the Regulation No.13

1. Can conduct grouping activities but shall comply with prescribed disease prevention measures.
  2. Can travel across the provinces.
  3. Can conduct all businesses or activities. Entrepreneurs or activity conductors shall set up the screening measurement for customers and shall comply with the main measures as follows:
    - Frequently clean the frequent touched surfaces.
    - Staff, employee, customer, and participant shall wear a mask.
    - Provide hand washing service points with soap or alcohol gel or disinfectants.
    - Control the amount of customers in order to prevent crowded.
    - Register "Thai-Chana" and prescribed application by the Government.
- \* Provincial Governor / Bangkok Governor can prescribe additional measures.

### Examples of important businesses and activities relief levels

- School can operate for teaching and learning at school 100%.
- Outdoor sport field can allow the audiences inside 50% / 25 % (3000/2000.)
- Indoor sport field can allow the audiences inside 25% / 15% (1000/500).
- Public transport can carry the passengers 100%.
- Movie theatre can allow the audiences inside 70%.
- Others according to Order of CCSA No. 8/2563, or according to the prescription of the Ad Hoc Committee.

## Level of managing situation: Yellow level

### Practice framework

According to the Regulation No.9

1. Can travel across the provinces.
  2. Can conduct businesses or activities relating to the economy and way of life including exercises and health care activities. Entrepreneurs or activity conductors shall set up the screening measurement for customers and shall comply with the main measures as follows:
    - Frequently clean the frequent touched surfaces.
    - Staff, employee, customer, and participant shall wear a mask.
    - Provide hand washing service points with soap or alcohol gel or disinfectants.
    - Control the amount of customers in order to prevent crowded.
    - Register "Thai-Chana" and prescribed application by the Government.
- \* Provincial Governor / Bangkok Governor can prescribe additional measures.

### Examples of important businesses and activities relief levels

- School can operate for teaching and learning at school but in case of crowded, then shall separate students for switch study.
- Outdoor sport field can allow the audiences inside 25% / 15 % (3000/1000).
- Indoor sport field cannot allow the audiences inside.
- Air public transport and BTS can carry the passengers 100%.
- Public transport can carry the passengers 70%.
- Movie theatre can allow the audiences inside 50%.
- Others according to Order of CCSA No. 3/2563, 4/2563, 5/2563, and 6/2563 or according to the prescription of the Ad Hoc Committee.

(Unofficial Translation)

## **Level of managing situation: Orange level**

Practice framework

According to the Regulation No.6

1. Limit traveling across the provinces.
  2. Can conduct certain businesses or activities in order to facilitate people in conducting activities relating to the economy and way of life including exercises and health care activities which are not at risks in spreading. Entrepreneurs or activity conductors shall set up the screening measurement for customers and shall comply with the main measures as follows:
    - Frequently clean the frequent touched surfaces.
    - Staff, employee, customer, and participant shall wear a mask.
    - Provide hand washing service points with soap or alcohol gel or disinfectants.
    - Control the amount of customers in order to prevent crowded.
    - Register "Thai-Chana" and prescribed application by the Government.
- \* Provincial Governor / Bangkok Governor can prescribe additional measures.

### **Examples of important businesses and activities relief levels**

- School shall provide online or/and on-air classes.
- Restaurant can sell food and beverages (except beverages with alcohol)
- Close entertainment spot, pub, and bar.
- Retail shop/ market fair/ fresh-food market can operate but shall comply with prescribed measures.
- Outdoor sports field for non-attack sport and Public Park can operate.
- Others according to Order of CCSA No. 2/2563, or according to the prescription of the Ad Hoc Committee.

## **Level of managing situation: Red level**

### **Practice framework**

According to the Regulation No.1

- Concentrate on prohibit from entering risk areas and close risk places.
- Close the Kingdom access points, except for some type of people.
- Prohibit from gathering.

According to the Regulation No.2 and 3

- Prohibit people in the Kingdom from going outside the dwelling, except for the people with the reason according to the Regulation No.5.

\* Provincial Governor / Bangkok Governor can prescribe additional measures.

### **Examples of important businesses and activities relief levels**

- School shall provide online or/and on-air classes.
- Traveling across the provinces is prohibited, except for goods transportation.
- Close businesses/activities, except for necessary business for living such as bank, factory, fuel station, goods and food delivery or according to the prescription of the Ad Hoc Committee.

## **School practical guideline for supporting the spread of Covid-19 situation**

According to the spread of Covid-19 situation which is more severe around the world and near countries such as Myanmar, Thailand has an area bordering Myanmar which is the most critical area having the continued increasing number of cumulative patients, thus this may be a risk of Covid-19 infection in community areas and schools which may affect to teaching and studying arrangement. Therefore, school shall have a practical guideline as per coordination schedules according to the severity of the Covid-19 epidemic of school which classified by each type of school, the details are as follows:

## **School: Basic Education**

**1. Group of students** - School arranges teaching and learning normally.

(All students, all classrooms, and all classes)

### **White-Green**

- School is located on unfound infected patient over 90 days (Green place) and granted the right to normally arrange teaching and learning from Provincial Disease Control Operation Center.

- School has the measures ordering all students, teachers, school personnel, and staffs to wear a cloth mask or a medical mask, have hand washing equipment and frequently clean hands. Clean classrooms, operation rooms or training rooms and its equipment both before and after using according to the measures of Ministry of Public Health.

### **Yellow-Orange**

- School arranges mixed teaching and learning by switching class day in each class or separating the amount of students for appropriate social distancing measures.

- Has the measures ordering all students, teachers, school personnel, and staffs to wear a cloth mask or a medical mask, have hand washing equipment and frequently clean hands.

- Clean classrooms, operation rooms or training rooms and its equipment both before and after using.

### **Red**

- School arranges online or on-air class.

(Unofficial Translation)

School: Vocational Education



**2. Group of Vocational students and High Vocational students.** -School arranges teaching and learning normally.  
(All students, all classrooms, and all classes)

**White-Green** - School is located on unfound infected patient over 90 days (Green place) and granted the right to normally arrange teaching and learning from Provincial Disease Control Operation Center.

- School has the measures ordering all students, teachers, school personnel, and staffs to wear a cloth mask or a medical mask, have hand washing equipment and frequently clean hands.

- Clean classrooms, operation rooms or training rooms and its equipment both before and after using.

**Yellow-Orange** - School arranges mixed teaching and learning by switching class day in each class or separating the amount of students for appropriate social distancing measures.

- Has the measures ordering all students, teachers, school personnel, and staffs to wear a cloth mask or a medical mask, have hand washing equipment and frequently clean hands.

- Clean classrooms, operation rooms or training rooms and its equipment both before and after using.

**Red** - School arranges online or on-air class.

## School: Non-formal and Informal Education

### 3. Group of Non-formal students - Arranging group meeting teaching and learning.

**White-Green** - Allow Non-formal students attend group meeting teaching and learning under the condition according to the measures of CCSA, Ministry of Public Health and Office of the Non-Formal and Informal Education.

**Yellow-Orange** - Cancel group meeting teaching and learning of the school where the epidemic is occurring.

- Coordinate with Ministry of Public Health under the measure of CCSA.

- Comply with the guidebook for managing Non-formal schools during Covid-19.

**Red** - Cancel group meeting teaching and learning of the school where the epidemic is occurring.

- Coordinate with Ministry of Public Health under the measure of CCSA.

- Comply with the guidebook for managing Non-formal schools during Covid-19.

#### Remark

##### **The arrangement of daily travelling record of students**

Students shall daily record their travelling and send to class teacher every morning. In case having family member are in risk, then shall immediately call to the school. School shall ready to arrange teaching and learning in school and on online system, if there is the second wave of Covid-19 epidemic.

**Travelling record information of students** all class teachers/advisers summarize and collect travelling record information of students.

# Contingency Plan for the epidemic situation of Covid-19

The spread of Covid-19 situation in Thailand tends to be better but the worldwide and near countries are still continuously severe. Therefore, for 100% school opening should specify the Contingency Plan, which is practical guideline according to the prevention measure against the spread of Covid-19, for the epidemic situation of Covid-19 in the school in order to strictly prepare and get ready for the situation that may arise.

## Guideline of the Contingency Plan for the epidemic situation of Covid-19 in the school

The details are as follows:

### 1. The prevention of Covid-19 from foreign countries

- o Foreign teacher shall be placed under 14-day state quarantine.
- o In case having a foreign student who lives in Thailand, the school can normally arrange teaching and learning. For a foreign student who does not live in Thailand, when entering Thailand, shall be placed under 14-day state/local quarantine.

Offer benefits consideration for code G students

- o Granted the rights of Social Security or Health Insurance.
- o Using funds of Ministry of Education for buying health insurance for code G students.
- o Using Distance Learning system instead of entering Thailand for study.
- o Border exchange entry and Organizational Quarantine
- o Covid-19 insurance for 1 year

### 2. The prevention of Covid-19 epidemic inside the country

- o Has Ad Hoc Center for arranging Distance Learning during the situation of Covid-19 epidemic.
- o Develops the information system in order to administrate during the situation of Covid-19 epidemic.
- o Opens OBEC Learning Connected - Fight Covid-19.

- o Provides the guideline for Distance Learning arrangement during the situation of Covid-19 epidemic.
- o Provides learning platform, suite and complete learning platform.
- o Provide the guideline for school management in order to prevent and control the Covid-19 epidemic.
- o Support plan for students from aboard, who return to Thailand to attend the school class, for the first semester of academic year2563.
- o Contingency guideline in emergency situation. In case there is the spread of Covid-19 in the school.

### **3. Surveillance and disease examination**

- o Screens the students, administrators, teachers, school personnel and relevant people. Shall wear a mask, clean hands, keep a distance between people, clean (classrooms, operation rooms, training rooms, learning buildings, canteens, dormitory, and common places) and reduce crowed.
- o Has the Covid-19 practical guideline for the administrators, teachers, and school personnel for example provide the school management guideline in preventing and controlling the spread of Covid-19, health screening measures in public health, and actions when there is a risk group or confirmed patient in the school.
- o Closing the school, where the epidemic occurring, and controlling the epidemic in the school.
- o Reports the assessment of performance, and problem and recommend to institutes, original affiliation and Provincial Communicable Disease Control Committee for making a decision.

### **4. All sectors cooperation creation**

- o Has coordination and information monitoring center between schools and institutes.

(Unofficial Translation)

- o School pairs with hospital or sub-district health promotion hospital for cooperation in preventing the spread of Covid-19.
- o School appoints the committee for prevention the spread of Covid-19 comprising of Public Health Officer, Local Government Officer, Administration and the School Committee.

## Guideline of the Contingency Plan for the epidemic situation of Covid-19 in the school

1. The prevention of Covid-19 from foreign countries	2. The prevention of Covid-19 epidemic inside the country	3. Surveillance and disease examination	4. All sectors cooperation creation
<p>O Foreign teacher shall be placed under 14-day state quarantine.</p> <p>O In case having a foreign student who lives in Thailand, the school can normally arrange teaching and learning. For a foreign student who does not live in Thailand, when entering Thailand, shall be placed under 14-day state/local quarantine.</p>	<p>O Has Ad Hoc Center for arranging Distance Learning during the situation of Covid-19 epidemic.</p> <p>O Develops the information system in order to administrate during the situation of Covid-19 epidemic.</p> <p>O Opens OBEC Learning Connected - Fight Covid-19.</p> <p>O Provides the guideline for Distance Learning arrangement during the situation of Covid-19 epidemic.</p> <p>O Provides learning platform, suite and complete learning platform.</p> <p>O Provide the guideline for school management in order to prevent and control the Covid-19 epidemic.</p> <p>O Support plan for students from aboard, who return to Thailand to attend the school class, for the first semester of academic year 2563.</p> <p>O Contingency guideline in emergency situation. In case there is the spread of Covid-19 in the school.</p>	<p>O Screens the students, administrators, teachers, school personnel and relevant people. Shall wear a mask, clean hands, keep a distance between people, clean (classrooms, operation rooms; training rooms, learning buildings, canteens; dormitory, and common places) and reduce crowd.</p> <p>O Has the Covid-19 practical guideline for the administrators, teachers, and school personnel for example provide the school management guideline in preventing and controlling the spread of Covid-19, health screening measures in public health, and actions when there is a risk group or confirmed patient in the school.</p> <p>O Closing the school, where the epidemic occurring, and controlling the epidemic in the school.</p> <p>O Reports the assessment of performance, and problem and recommend to institutes, original affiliation and Provincial Communicable Disease Control Committee for making a decision.</p>	<p>O Has coordination and information monitoring center between schools and institutes.</p> <p>O School pairs with hospital or sub-district health promotion hospital for cooperation in preventing the spread of Covid-19.</p> <p>O School appoints the committee for prevention the spread of Covid-19 comprising of Public Health Officer, Local Government Officer, Administration and the School Committee.</p>



## OQ Preparation

Strictly follows the prescribed measures by CCSA and Ministry of Public Health. For overall image, MOE will send the student to stay in the specified area by MOE by using government offices where located at border provinces.

### Organizational Quarantine preparation for code G student

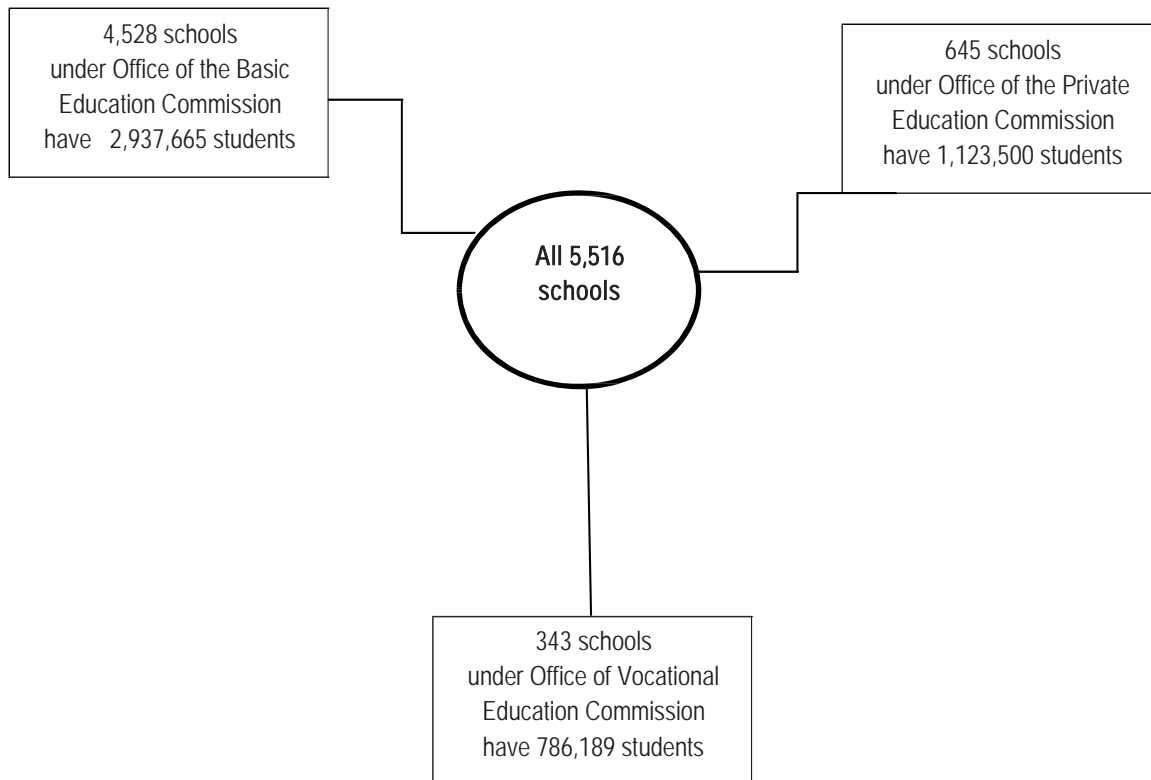
1. Center surveys the students, who will enter to Thailand, in each border.
2. Local chooses suitable places for OQ and coordinates with Provincial Communicable Disease Control Committee.
3. Coordinates with students under Ministry of Education in order to facilitate them entering the immigration.
4. Arranges the students to OQ according to the measures of Ministry of Public Health for 14 days.
5. Provides suitable teaching and learning in order to make the students can learn during quarantine.
6. At the end of 14 days, sends the students to the school where they are studying.



## Practical guideline on relieve measures for school

According to the situation of Covid-19 epidemic that there is no spread inside the country for long period and has relieved certain measures, therefore should unlock the students to be able to study in the classroom fully and this will cause the school can arrange teaching and learning completely. If switching school days, it may cause lack of learning continuity. However, the number of schools where would like to normally arrange teaching and learning in the school for all students is 5,516 school comprising of 4,528 schools, 2,937,665 students, under Office of the Basic Education Commission, 645 schools, 1,123,500 students, under Office of the Private Education Commission, and 343 schools, 786,189 students, under Office of Vocational Education Commission.

### Schools where would like to normally arrange teaching and learning in the school for all students (All students, all rooms, and all classes)



**School practical guideline for starting the semester in order to let the students come to study in classroom or 100% on site, the details are as follows:**

1. Can normally arrange teaching and learning on site.
2. Classroom arrangement can arrange according to the normal number of students by providing the distance as much as possible.
3. In case of Air-conditioned classroom shall open doors and windows during lunch break or no class in that room.
4. Supplementary measures shall be intense.
  - Screening, separating patient, sending to medical treatment
  - Wearing a medical mask, cleaning hand frequently, reducing unnecessary group conversation
  - Reducing joint classrooms activities
  - In case of classroom switching, shall clean tables, chairs or common equipment all the time after class.
  - Every classroom shall clean tables, chairs or common equipment every 2 hours.
5. Record the respiratory illness and Covid-19 detection and summarize the result of survey weekly to original affiliation. In case there is illness child or absence more than usual, then coordinate with Local District/Provincial Public Health Office.
6. Follow the relief measures which supervised by School Commission and Local Public Health Agencies.
7. Measures adjustment shall be considered intermittently according to the epidemic situation and information at that time.



## 4

# Monitoring and Evaluation

Integrated guideline for monitoring and evaluation on teaching and learning arrangement and operation according to the epidemic of Covid-19 prevention measures in the school, Ministry of Education has prescribed an inspection, monitoring and evaluation on teaching and learning arrangement during the situation of Covid-19 epidemic throughout the country and reported such findings as a policy proposal for the decision of the Minister of Education and as information in driving the policy on teaching and learning arrangement in the situation of Covid-19 epidemic by surveying the areas to monitor the implementation of such policy including gathering the information via electronic systems in order to follow up the teaching and learning arrangement policy in the situation of Covid-19 epidemic.

After the beginning of semester 1/2563 (1<sup>st</sup> July 2020) monitoring, Ministry of Education and Ministry of Public Health have integrated work together by prescribing the guideline for monitoring and evaluation on teaching and learning arrangement and operation according to the epidemic of Covid-19 prevention measures after the beginning of semester 1/2563 (from 1<sup>st</sup> July 2020). According to the guideline of Center for Covid-19 Situation and administration (CCSA), that has the Prime minister be the head, assigned Ministry of Education to integrated work with Ministry of Public Health in monitoring and evaluating after the beginning of semester 1/2563. Therefore, Ministry of Education and Ministry of Public Health set the meeting on 29<sup>th</sup> June 2020, Permanent Secretary for Education was a chairman of the meeting, in order to clarify work mobilization on school health and integrated monitoring and evaluation on teaching and learning arrangement. The meeting has assigned the inspector of Ministry of Education, the inspector of Ministry of Public Health, Director-General, Regional Education Office and Sub Director-General, Regional Education Office together with the representative of Ministry of Public Health to survey the schools for monitoring and evaluating and reporting the progress to Center for Covid-19 Situation and administration (CCSA).

The spread of Covid-19 situation in Thailand tends to be better but should continuously monitor because the worldwide situation is still increasingly severe especially in USA and Europe. However, Center for Covid-19 Situation and administration (CCSA) made an announcement on 10<sup>th</sup> August 2020 that there are no infected people, who infected from inside the country, for 77 days and CCSA had a relief measures in phase 5 and 6 respectively in order to make people can get more normal live. Ministry of Education allowed schools can 100% operate and found no infected people in schools. Therefore, has prepared the integrated guideline for monitoring and evaluation on teaching and learning arrangement during the situation of Covid-19 epidemic in schools according to the diagram of monitoring and evaluation in collaboration with the Department of Health, Ministry of Public Health as follows:





(Unofficial Translation)

<b>SDHSO:</b>	Social Development and Human Security Office
<b>PAO:</b>	Provincial Administration Organization
<b>CMO:</b>	City-Municipal Office
<b>M:</b>	Municipality
<b>MD:</b>	Municipal District
<b>MAO:</b>	Municipal District Administration Organization
<b>VHV:</b>	Village Health Volunteers
<b>PESAO:</b>	Primary Educational Service Area Office
<b>SESAO:</b>	Secondary Educational Service Area Office
<b>OPS:</b>	Office of the Permanent Secretary
<b>OBEC:</b>	Office of the Basic Education Commission
<b>OPEC:</b>	Office of the Private Education Commission
<b>NFC:</b>	Office of the Non-Formal and Informal Education
<b>M&amp;E:</b>	Joint Monitoring and Evaluation Commission (Ministry of Education & Ministry of Public Health)

<b>Department of Academic:</b>	- Thai Pediatrics
	- WHO th.
	- Unicef Th.
	- PIDST

Ministry of Education and Ministry of Public Health have jointly provided the integrated guideline for monitoring and evaluation on teaching and learning arrangement and implementation of Covid-19 epidemic prevention measures in the school after the semester beginning of 1/2563 from July 2020 onwards, in order to force related agencies under its subjection including area agencies such as Regional Education Office, Provincial Education Office, schools and etc. to perform together by having government inspection and monitoring and evaluation machinery as follows:

### **Group of Ministry of Education**

1. Inspector General for Education
2. Specialist / Department Inspector
3. Director-General Regional Education Office
4. Director, Provincial Education Office
5. Provincial Education Board
6. Educational Service Area: PESAO / SESAO

### **Group of Ministry of Education**

1. Inspector for Public Health
2. Provincial Public Health Medical Doctor
3. Representative of Provincial Communicable Disease Control Committee
4. Director of Health Center, Director of Disease Control Prevention Office, Director of Mental Health Center
5. School Health Coach

## Responsibilities

1. Give an advices, recommend on the prevention of Covid-19 epidemic.
2. Change knowledge, the problem of school performing and propose the guideline on joint operation between Ministry of Education and Ministry of Public Health.
3. Summarize issues and policy proposals on operation of the prevention of Covid-19 epidemic.

## Period of time

After the beginning of 1<sup>st</sup> and 2<sup>nd</sup> semester of academic year 2563

After the beginning of academic year 2564

## Monitoring and Evaluation

The issues of Monitoring and Evaluation of Ministry of Education by Inspector General for Education and Director-General Regional Education Office together with Ministry of Public Health are as follows:

1. General information of school  
(Affiliate, type of education arrangement, learning levels operation, size of school)
2. School opening (in case of On Site learning)
3. Online teaching and learning form, the readiness of parents
4. Operation according to Contingency Plan of Affiliate Agency or Government
5. Operation according to the prevention measures against the spread of Covid-19 of Ministry of Public Health or Government.
6. Contingency Plan preparation in case found teacher or school personnel either having fever and/or having respiratory problem (Department of Health).
7. Practice for relief measures on normal teaching and learning arrangement.
8. Problem, obstacle, and limitation on teaching and learning arrangement and prevention measures in the situation of Covid-19 epidemic.



## 9. Recommendation

### **Monitoring and Evaluation Tool**

Follow-up Form for Assessment on Learning and Teaching Management and Administration in accordance with the Preventive Measures During the Spread of Covid-19 Situation of the Ministry of Education and the Ministry of Public Health Semester 1/2563 as appendix.

### **Report system**

Monitoring and Evaluation on teaching and learning arrangement and implementation of Covid-19 epidemic prevention measures report, which collecting from Site Visit of the inspector and Monitoring and Evaluation group between Ministry of Education and Ministry of Public Health, and school implementation assessment report shall report by putting the information into electronic system which developed by Information and Communication Technology Center, Office of the Permanent Secretary for Education ([www.covid.moe.go.th](http://www.covid.moe.go.th)) or Thai Stop Covid system.

## Health School Coach

The opening of school semester during the situation of Covid-19 epidemic, shall consider children's' well-being and quality of life. These include nutrition, safety, personal hygiene, physical health, mental health, and environment providing which conducive to the wellbeing of students. Therefore, there should assign Health School Coach to responsible for being consultant and monitoring the implementation of school measures according to the prescribed policies of Government as well as reporting the information to medical and public health personnel in order to plan for help promptly, thus specifies role and responsibilities as follows:

### Role and responsibilities of Health School Coach

1. Being a Health Coach on the prevention of the spread of Covid-19 in the school and community.

2. Joining the provincial government inspection team and monitoring and evaluation on the prevention of the spread of Covid-19 in the school.

3. Being an external assessor on monitoring the implementation of school practical guideline for preventing the spread of Covid-19 by randomly assessing 3 schools per months according to the school self-assessment form on the preparation after the opening of semester and the student self-assessment form on the preparation after the opening of semester on Covid-19 epidemic prevention in the amount of 10 students per school and reporting such information via online platform.

4. Being an external assessor on monitoring and preventing the spread of Covid-19 in community by randomly assessing 3 communities per months according to the assessment form on monitoring and preventing the infection of Covid-19 for market type (1 market per month) and for food and beverages restaurant, wheelbarrow, peddler, and stall type (2 places per month) including randomly choosing aforesaid places customers to do self-assessment on the prevention of Covid-19 epidemic (10 people per place) and reporting such information via online platform.

## 5

# Practical Guideline on considerations for school closure during Covid-19 occurring

### Definition

- ✓ **Patient with confirmed Covid-19** means a person who has laboratory results with Covid-19 infection.
  
- ✓ **High risk contact person** means a person who has closed contact with Covid-19 confirmed patient according to any one of the following characteristics;
  - A person who studies or lives or works in the same room with Covid-19 confirmed patient.
  - A person who had a conversation with patient in a distance of 1 meter for more than 5 minutes or was cough, sneeze by Covid-19 patient without the prevention for example not wearing a medical mask or a cloth mask.
  - A person who stayed in enclosed area of ventilation such as inside air-con vehicle, air-conditioned room with Covid-19 patient and was apart from such patient less than 1 meter for more than 15 minutes without the prevention for example not wearing a medical mask or a cloth mask.
  
- ✓ **Low risk contact person** means a person who participated in other activities with Covid-19 patient but not meet high risk criteria.
  
- ✓ **Close contact person**
  - A person who has close contact with high risk contact person is classified as low risk person.
  - A person who has close contact with low risk contact person is classified as no risk.

## Practical Guideline when Covid-19 confirmed patient was found in the school

**Close** classroom/class/school, in case of **founding** Covid-19 confirmed patient

1. In case, found more than one Covid-19 confirmed patients

Shall **close classroom** 3 days for cleaning

2. In case, found Covid-19 confirmed patients more than one classrooms

Shall **close class** 3 days for cleaning

3. In case, has an evidence and necessity to **close the school**

Shall request the approval from Provincial Communicable Disease Commission

**Do not close** classroom/class/school, in case of **not founding** Covid-19 confirmed patient

By having the guideline as follows:

1. High risk contact person in school

- High risk contact person observes self-symptoms at home for at least 14 days. In case, found unusual symptoms then shall go to see a doctor for diagnosis and quarantine at home while waiting for the results.

- The school can normally operate and shall communicate with relevant people in order to make them understand on the risks and the guideline on next step actions.

2. Low risk contact person observes self-symptoms for 14 days. No need to stop studying and no need to closing the school. (Get symptomatic treatment, if recover from the illness, then can continue study)

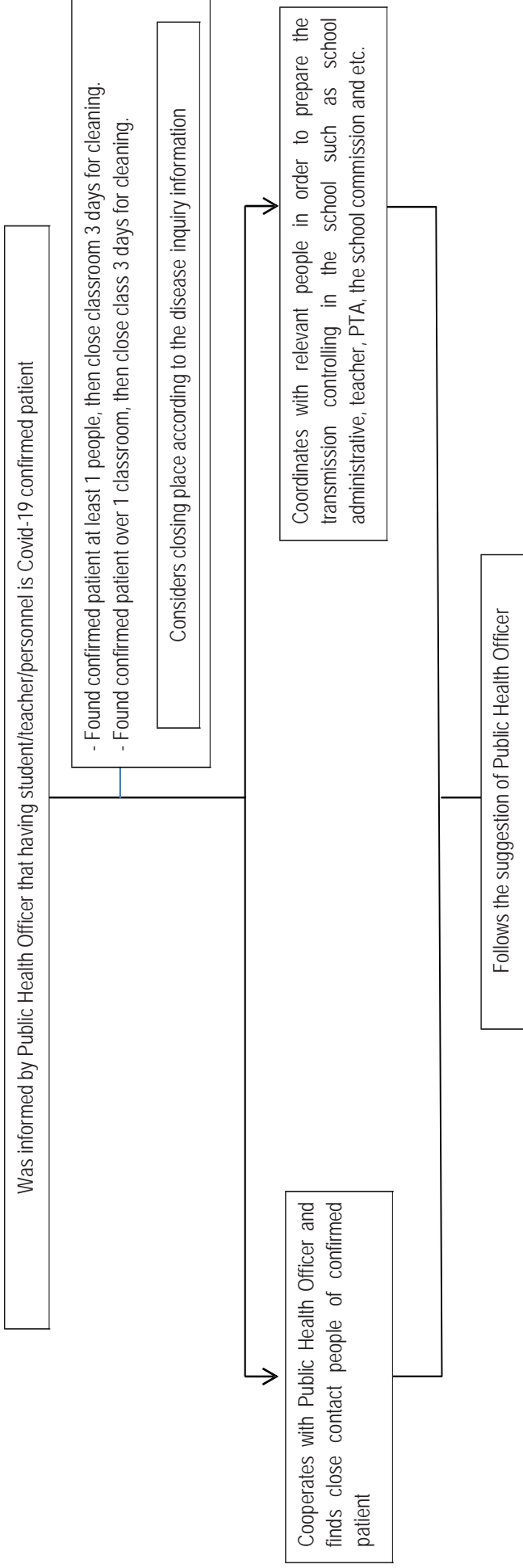
### 3. Close contact person

- A person who has close contact with high risk contact person is classified as low risk person, then no need to stop studying but shall observe self-symptoms for 14 days.

- A person who has close contact with low risk contact person is classified as no risk, then no need to stop studying but shall observe self-symptoms for 14 days.

**Remark:** However, all cases shall proceed based on the information of epidemiology and the area disease situation inquiry.

## Practical guideline when found “Covid-19 confirmed patient” in the school



**Remark** In case, Covid-19 confirmed patient is other personnel, who not involved in teaching and learning activities in the classroom such as janitor, cook, merchant and etc., therefore, there is no need to close classroom unless there has the clear information on disease investigation.

(Unofficial Translation)



# Appendix

(Unofficial Translation)

**VERY URGENT**

-Official Emblem-

No. Sor. Tor. 04005/Wor.880

Office of the Basic Education Commission

Ministry of Education, Bangkok 10300

15 July 2020

Subject: Guidelines for Educational Institutions in case of Suspecting Students or Educational Institution Personnel of Having a Risk to Get Infected with Coronavirus (Covid-19)

Attn.: Directors of Educational Service Area Office

Ref.: Announcement of Ministry of Education re: Starting of Educational Institutions Affiliated with and Under Control of the Ministry of Education, Announced on 9 April 2020

With regards to the aforementioned reference, the Ministry of Education had set the starting of 1<sup>st</sup> semester of the academic year 2020 from 1 July 2020 by requiring educational institutions to manage learning and teaching activities in accordance with announcement of emergency situation for the safety of students and educational institution personnel, as to such matter there would be a risk of getting infected with Coronavirus (Covid-19).

As such, the Office of the Basic Education Commission therefore requests you to inform affiliated educational institutions to proceed with the following that: in case of detecting students or educational institution personnel having a flu, a body temperature more than 37.5 Celsius together with any of the respiratory symptoms, it should provide separated areas or take to meet with doctors. For students, it should advise the parents to pick up and rest at home until getting recovery and inform public health officers to evaluate the situation within the school buildings and proceed with the disease examination for suggestion to closing schools. In case of detecting students getting infected with Coronavirus 2019 (Covid-19), it should immediately and urgently report the Educational Service Area Office for further report to the Centre for Covid-19 Situation Administration, Provincial Level to consider permission for closing the school at class level, grade level or educational institution.

Accordingly, this is to inform for acknowledgment and further action.

Sincerely yours,

*-Signature-*

(Mr. Kawinkiat Nonthapala)

Deputy Secretary-General of the Basic Education Commission Acting  
Secretary-General of the Basic Education Commission

Office of Technology for Learning and Teaching  
Distance Learning Operation Centre during Coronavirus 2019 Disease Situation (Covid-19)  
Tel. 0 2288 5704, 0 2628 5099



(Unofficial Translation)

Name lists of the Inspector and Monitoring and Evaluation group  
on implementation of Covid-19 epidemic prevention measures in the school year 2020-2021  
between Ministry of Education and Ministry of Public Health

QR Code Inspector



<http://bit.do/Inspector>

QR Code Health-Coach



<http://bit.do/Health-Coach>

QR Code school\_hospital



[http://bit.do/school\\_hospital](http://bit.do/school_hospital)

**Follow-up Form for Assessment on Learning and Teaching Management and Administration in accordance with the Preventive Measures During the Spread of Covid-19 Situation of the Ministry of Education and the Ministry of Public Health**  
**Semester 1/2020 (No. 3 September 2020)**

**Explanation**

This assessment, the Ministry of Education together with the Ministry of Public Health by the consent of the Centre for Covid-19 Situation Administration (CCSA), is made for following up on the assessment on learning and teaching management and administration in accordance with the preventive measures during the spread of Covid-19 situation semester 1/2020 of the educational institution. Therefore, it is required cooperation from the educational institution to complete the form truthfully for making a report in an overall perspective.

**1. General Information of the Educational Institution**

**1.1 Name of Educational Institution** ..... **Province** .....

**1.2 Educational Institution Code under the Ministry of Education (Code 10 digits of MOE)** .....

**1.3 Informant** ..... **Position** .....

**1.4 Educational Institution Affiliated with**

- Office of the Basic Education Commission (OBEC)
- Office of the Private Education Commission (OPEC)
- Office of the Vocational Education Commission (OVEC)
- Office of the Non-Formal and Informal Education (NFE)
- Border Patrol Police
- Bangkok
- National Office of Buddhism
- Other Affiliations (specify) .....

**1.5 Type of Educational Management**

- Basic Education
- Vocational Education
- Non-Formal and Informal Education
- Special Education

**1.6 Level of Grade**

- Pre-Elementary School
- Kindergarten – Elementary School
- Kindergarten – Junior High School
- Kindergarten – Senior High School
- Elementary School
- Elementary School – Junior High School

- Elementary School – Senior High School
- Junior High School
- Senior High School
- Junior High School – Senior High School
- Vocational Certificate (Voc. Cert.)
- High Vocational Certificate (High Voc. Cert.)
- Vocational Certificate (Voc. Cert.) - High Vocational Certificate (High Voc. Cert.)
- Short-Term Program
- Others (Please specify.....)

**1.7 Size of Educational Institution (according to the criteria of each affiliation)**

- Extra Large Size                       Large Size                       Medium Size
- Small Size                                       Small Size (no more than 120 people)

**2. Operation on the Opening of Educational Institution On-Site (full students, full rooms, full classes)**

**2.1 Distancing inside the classroom**

- Able to manage in accordance with the measures and practices as prescribed in all learning and teaching activities
- Able to manage in accordance with the measures and practices as prescribed but not in all learning and teaching activities
- Unable to manage as such because.....

---

**2.2 Record of Students' Traveling Daily Report**

- All students in the school are able to do
- Not all students in the school are able to do
- Students in the school are unable to do because.....

---

**2.3 Summarizing the Record of Students' Traveling Daily Report**

- Every** class teachers/class advisors **summarizes the information** of students' traveling daily report and keeps record systematically
- Some** class teachers/class advisors **summarize the information** of students' traveling daily report and keep record systematically
- All** class teachers/class advisors **do not summarize the information** of students' traveling daily report because.....

**3. Operation according to the Contingency Plan in case of the Spread of Covid-19 as prescribed by the Original Affiliation/Government**

(Such as in case of traveling from abroad, students in group G, protection in the country, screening and monitoring, cooperation with all sectors, and etc.)

- Do not know the contingency plan
- Know and be ready to do
- Know but is not ready to do because.....

**4. Operation according to the Controlling and Preventive Measures of the Spread of Covid-19 Disease as prescribed by the Ministry of Public Health/Government (Department of Health)**

**4.1 Safety Measures for Decreasing the Spread of Germs 20 points**

- All-checked
- Not all-checked (Please specify the point(s) that cannot do together with reasons)  
Point No. \_\_\_\_\_ Because \_\_\_\_\_  
Point No. \_\_\_\_\_ Because \_\_\_\_\_

**4.2 Learners, Teachers, or Educational Institution Personnel have got flu or respiratory symptoms, one or the other (cough, runny nose, sore throat, loss of smell, rapid breathing, short of breath, or got dyspnea) within 2 past weeks**

- None
- Yes, 1 – 4 people
- More than 5 people

**4.3 Learners, Teachers, or Educational Institution Personnel have got sick with respiratory symptoms for more than 5 people in the same room within the same week**

- None
- Yes

**4.4 Learners, Teachers, or Educational Institution Personnel and Visitors have registered before and after entering the school by using an application or recording and reporting**

- None
- Yes

**5. Preparation of the Contingency Plan in case of Encountering Learners, Teachers, or Educational Institution Personnel have got flu or respiratory symptoms, one or the other (cough, runny nose, sore throat, loss of smell, rapid breathing, short of breath, or got dyspnea)**

- None
- Yes, specify (can choose multiple choices)
  - Preparing separated rooms or areas
  - Having a contact channel for parents
  - Having a contact channel for public health officers
  - Transferring to public health providers
  - Closing of classes, grades, or educational institution
  - Cleaning
  - Others \_\_\_\_\_

**6. Practicing in accordance with Main 6 Measures on Prevention of the Spread of Covid-19 Disease in the Educational Institution**

No.	Measures	Level of Practicing				
		Most 5	More 4	Moderate 3	Low 2	Very Low 1
1	Having a measure for screening flu of learners, teachers, or educational institution personnel					
2	Having a strict measure requiring learners to wear fabric masks or surgical masks while attending the school					
3	Providing hand-washing facilities with soaps and water or alcohol gels sufficiently					
4	Having a strict measure requiring learners to wash their hands frequently					
5	Distancing inside the classroom according to the measures on prevention of the spread of Covid-19 disease					

(Unofficial Translation)

6	Cleaning the table surfaces, chairs, or commonly used items in every classes after finishing learning and teaching or every two hours					
7	Cleaning the touching surfaces or commonly used areas frequently such as handrails, door knobs, etc.					
8	Opening windows of the classroom for air flowing during lunch break or when there is no learning and teaching					
9	Having a measure requiring learners to avoid gathering for unnecessary conversation					
10	Having a measure to avoid crowding activities such as camping, sports competitions, etc.					
11	Having a measure for reducing overcrowding of learners in the common areas such as playground, canteen, library, etc.					
12	Having a strict management of picking up – dropping off buses for students according to the measures on prevention of the spread of Covid-19 disease					

**7. Problems, Obstacles, or Limitations in Learning and Teaching Management and Administration in accordance with the Preventive Measures during the Spread of Covid-19**

- Educational Institution lacks of budget for developing and improving according to the measures
- Buildings, classrooms, operational rooms are not sufficient and suitable for learning and teaching
- Not having sufficient teachers for teaching
- Learners are not aware to comply with the measures
- Others (Please specify .....

**8. Suggestions**

.....

.....

.....

.....

.....

.....

.....

Thank you for your kind cooperation



Ministry of Education    Ministry of Public Health

## Practical Guideline according to Mitigation Measures of Affairs and Activities in order to Prevent the Spread of Covid-19 in Exercising Activities, Music Shows, Concerts, and Sports Competitions

### Guidelines for Music Shows

- 1) Providing the flu screening points for singers, music performers, attendees, and any related persons. In case of detecting a person having a cold, coughing, sneezing, runny nose, or rapid breathing, or having a body temperature equivalent or more than 37.5 Celsius, such person shall be informed for suspension of service and suggested a meeting with doctors.
- 2) Requiring all chorus, singers, music performers, and attendees to wear fabric masks or surgical masks at all times except performers, singers, music performers can take off their fabric masks or surgical masks while performing or singing and use necessary personal protection such as Face Shield.
- 3) Minimizing sharing high-touch such as using of personal materials (microphones, headphones) sufficiently for users. Performers are encouraged to bring their personal materials or having cleaning measures in case of sharing materials.
- 4) Providing sufficient alcohol gel for hand washing at all areas.
- 5) Having measures or symbols for proper distancing
  - Maintain a distance of at least 1-2 meters between persons
  - Provide points and areas for sitting/standing for attendees at a distance of at least 1 meter
  - Provide the gap between the stage and sitting/standing areas of attendees at least 5 meters
- 6) Cleaning at the areas or commonly used as follows:
  - Clean the touching surfaces or sharing items with cleaning solution and may sanitize with 70% alcohol or sodium hypochlorite (liquid bleach) 0.1% at the sharing materials such as microphones, stereos, counters, handrails, door knobs, buttons, information counters, tables, seats, sharing points in the dressing room and etc.
- 7) Adjusting the performance and keep distancing such as using online live streaming, limiting the performers, organizing activities for a private group or social bubble.

(Unofficial Translation)

- 8) In case of organizing indoor activities, should provide good and sufficient air flowing systems inside the buildings and restrooms and clean the air conditioners frequently at least every 6 months and refrain from smoking inside the buildings.
- 9) Providing guidelines for entering the buildings by providing suggestions, using public relation media to provide information for protecting from and reducing the spread of germs for students and school personnel to strictly follow.

## Guideline for Performances

- 1) Providing the flu screening points for singers, music performers, attendees, and any related persons. In case of detecting a person having a cold, coughing, sneezing, runny nose, or rapid breathing, or having a body temperature equivalent or more than 37.5 Celsius, such person shall be informed for suspension of service and suggested a meeting with doctors.
- 2) Requiring all chorus, singers, music performers, and attendees to wear fabric masks or surgical masks at all times except performers, singers, music performers can take off their fabric masks or surgical masks while performing or singing and use necessary personal protection such as Face Shield.
- 3) Minimizing sharing high-touch such as using of personal materials (microphones, headphones) sufficiently for users. Performers are encouraged to bring their personal materials or having cleaning measures in case of sharing materials.
- 4) Providing sufficient alcohol gel for hand washing at all areas.
- 5) Having measures or symbols for proper distancing
  - Maintain a distance of at least 1-2 meters between persons
  - Provide points and areas for sitting/standing for attendees at a distance of at least 1 meter
  - Provide the gap between the stage and sitting/standing areas of attendees at least 5 meters
- 6) In case of organizing indoor activities, should provide good and sufficient air flowing systems inside the buildings and restrooms and clean the air conditioners frequently at least every 6 months and refrain from smoking inside the buildings.
- 7) Providing guidelines for entering the buildings by providing suggestions, using public relation media to provide information for protecting from and reducing the spread of germs for students and school personnel to strictly follow.



## Guideline for Concerts

- 1) Limiting the amount of attendees for not more than 200 people.
- 2) Having measures or symbols for proper distancing
  - Provide seats at a distance of not less than 1 meter or provide seats at every other row and sit every other 2 seats for distancing.
  - Maintain a distance of at least 1-2 meters between persons
  - Provide points and areas for sitting/standing for attendees at a distance of at least 1 meter
  - Provide the gap between the stage and sitting/standing areas of attendees at least 5 meters
- 3) Providing sufficient alcohol gel for hand washing at all areas.
- 4) Cleaning at the areas or commonly used as follows:
  - Clean the touching surfaces or sharing items with cleaning solution and may sanitize with 70% alcohol or sodium hypochlorite (liquid bleach) 0.1% at the sharing materials such as microphones, stereos, counters, handrails, door knobs, buttons, information counters, tables, seats, sharing points in the dressing room and etc.
- 5) Adjusting the performance and keep distancing such as using online live streaming, limiting the performers, organizing activities for a private group or social bubble.
- 6) In case of organizing indoor activities, should provide good and sufficient air flowing systems inside the buildings and restrooms and clean the air conditioners frequently at least every 6 months and refrain from smoking inside the buildings.
- 7) Providing guidelines for entering the buildings by providing suggestions, using public relation media to provide information for protecting from and reducing the spread of germs for students and school personnel to strictly follow.

## Guideline for sport competition

1) Setting up screening system for screening competition organizers, staffs and athletes. If found the symptoms of fever, cough, snot, or gasp for breathe, or body temperature is 37.5°C or over, thus shall not participate in the activities and recommend to see a doctor. Moreover, shall set up risks screening and examining system 14 days before the competition day for athletes, trainers, judges and competition organize staffs.

2) Trainers, judges, backup shooters who not compete, and competition organize staffs shall wear a medical mask or a cloth mask all the time.

3) Providing sufficient hand washing facilities with soap or alcohol gel around the areas such as the entry, in front of athletes' rooms, toilets and etc.

4) Limiting the number of people for avoiding crowed for examples; limit the number of trainers, judges, backup shooters who not compete, and competition organize staffs, limit the number of people at least 1 people per 4 square meters of sport field area (excluding parking), provide clear ways for in and out separately, provide advance registration system for athletes, trainers, judges and competition organize staffs.

5) Providing suitable distance spaces by having gap of spaces for backup shooters, trainers, judges and competition organize staffs at least 2 meters between each other or at least 1 meter in case of having the partition by providing clear marks or signs.

6) Cleaning the spaces or common touched areas.

## Guideline for swimming pool usage

- 1) Arranging basic screening and monitor illness people such as the symptoms of fever, cough, snot, sore throat, gasp for breathe, cannot smell and taste before entering the swimming pool every time in order to prevent the spread of diseases.
- 2) Providing in-out registration and limit only one access.
- 3) Strictly following the suggestion of sterilization system in order to make the system efficient.
- 4) Checking the quality of water every day and specify the measures before entering the swimming pool.
- 6) Preparing personal equipment for swimming such as swimming goggles, bathing cap, swimming suit, towel and etc.
- 7) Providing good ventilation system, which have sufficient turnover ratio both in the building and toilets, air change per hour  $\geq 10$ , and frequently clean air-conditioner at least every 6 months.

## Guideline for sport fields

1) Setting up screening system for screening competition organizers, staffs and athletes. If found the symptoms of fever, cough, snot, or gasp for breathe, or body temperature is 37.5°C or over, thus shall not participate in the activities and recommend to see a doctor. Moreover, shall set up risks screening and examining system 14 days before the competition day for athletes, trainers, judges and competition organize staffs.

2) Trainers, judges, backup shooters who not compete, and competition organize staffs shall wear a medical mask or a cloth mask all the time.

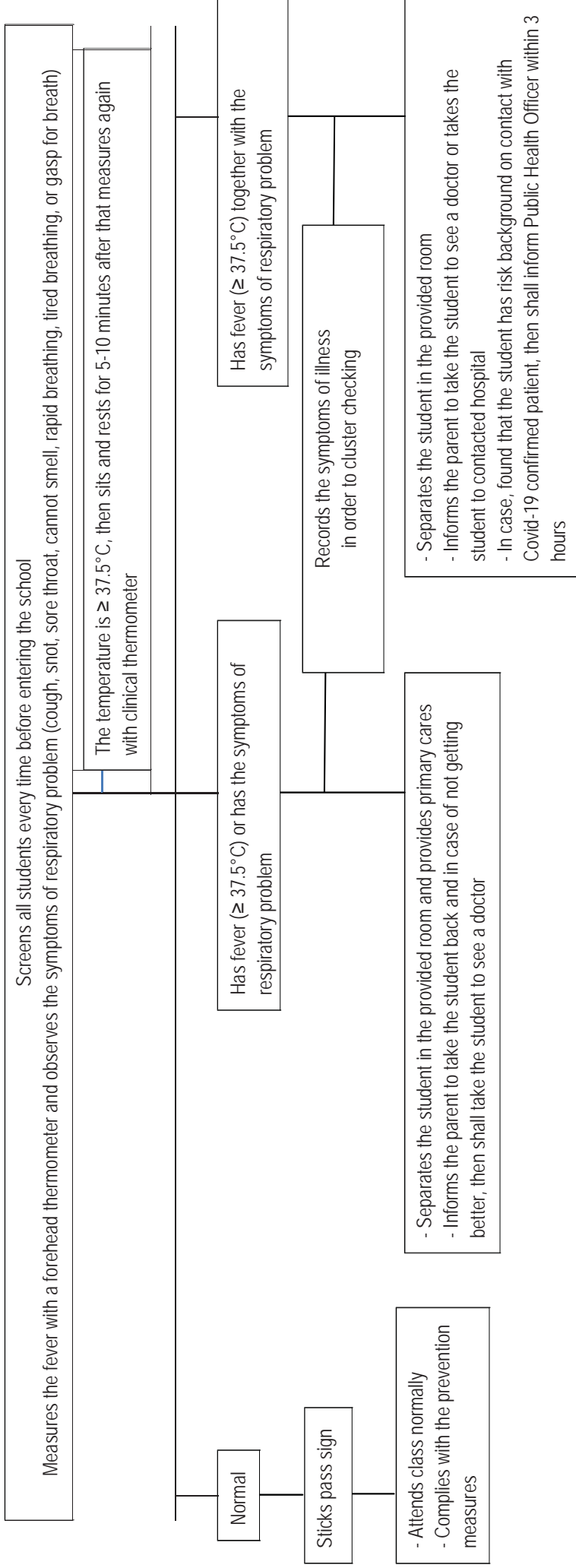
3) Providing sufficient hand washing facilities with soap or alcohol gel around the areas such as the entry, in front of athletes' rooms, toilets and etc.

4) Limiting the number of people for avoiding crowed for examples; limit the number of trainers, judges, backup shooters who not compete, and competition organize staffs, limit the number of people at least 1 people per 4 square meters of sport field area (excluding parking), provide clear ways for in and out separately, provide advance registration system for athletes, trainers, judges and competition organize staffs.

5) Providing suitable distance spaces by having gap of spaces for backup shooters, trainers, judges and competition organize staffs at least 2 meters between each other or at least 1 meter in case of having the partition by providing clear marks or signs.

6) Cleaning the spaces or common touched areas.

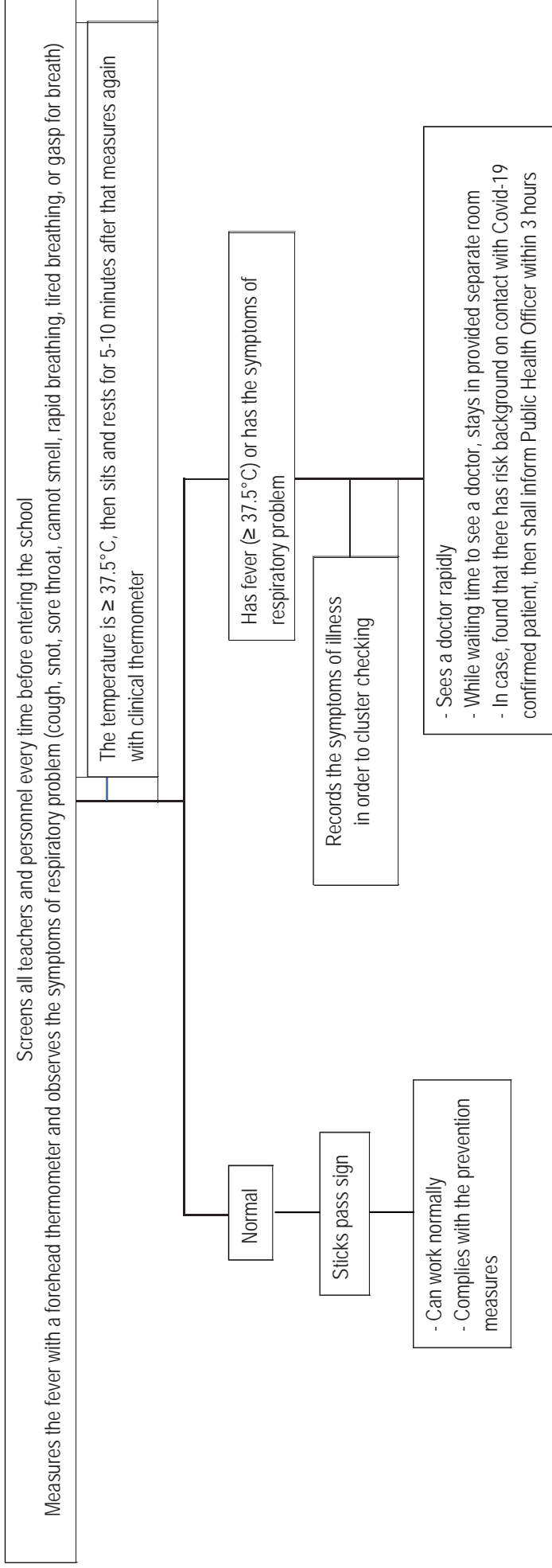
## Practical guideline for screening “students” in the school in order to monitor and prevent the spread of Covid-19



### Remark:

1. Uses forehead thermometer for fever screening but uses clinical thermometer (by armpit) for confirming measurement.
2. Should separate room for the person who has fever together with the symptoms of respiratory problem from patient with other symptoms.
3. In case, the amount of patients is 2 people or over, the provided room should have a partition and keep at least 2 meters distances between beds.
4. In case, found illness student during the day, then separate such student in the provided room and inform the parent to take the student back for primary caring and in case of not getting better, then shall take the student to see a doctor

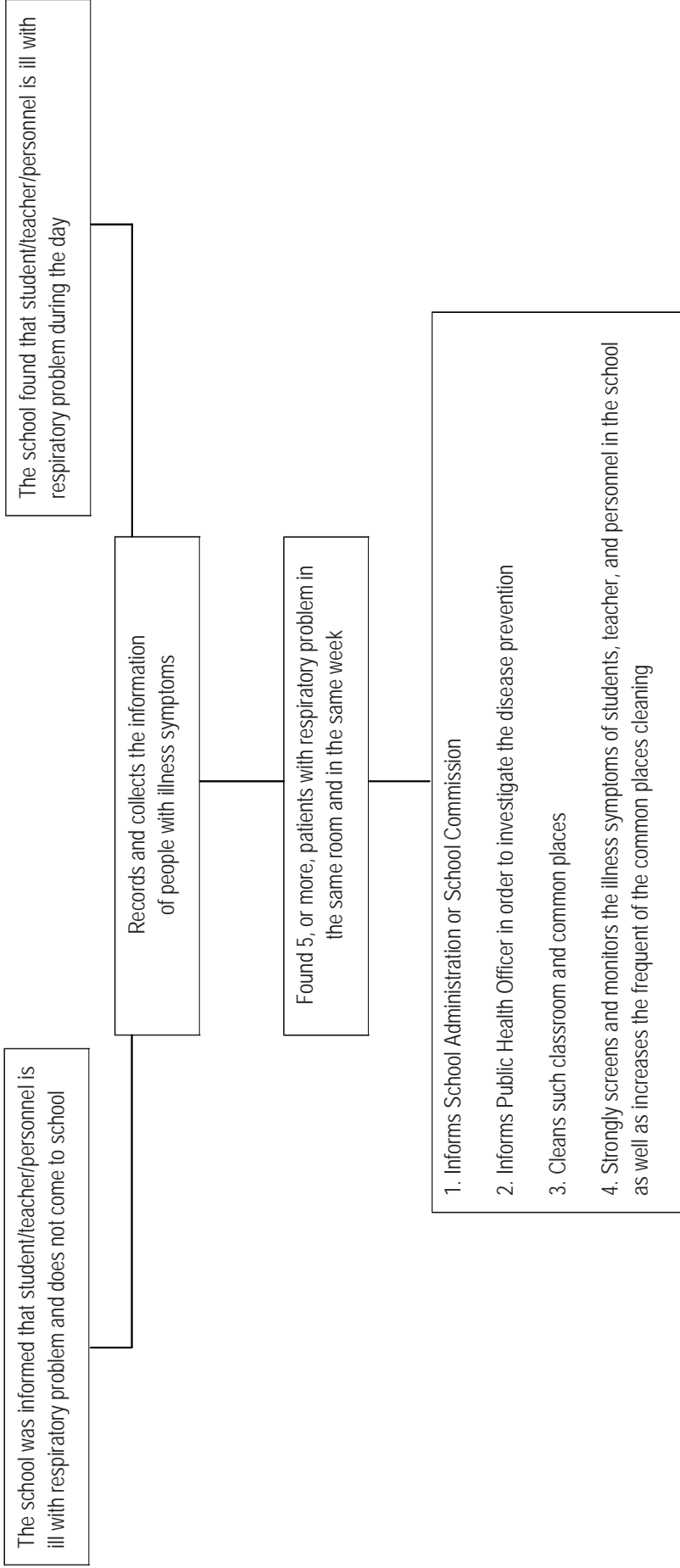
## Practical guideline for screening “teachers and personnel” in the school in order to monitor and prevent the spread of Covid-19



### Remark:

1. Uses forehead thermometer for fever screening but uses clinical thermometer (by armpit) for confirming measurement.
2. Should separate room for the person who has fever together with the symptoms of respiratory problem from patient with other symptoms.
3. In case, the amount of patients is 2 people or over, the provided room should have a partition and keep at least 2 meters distances between beds.
4. In case, found illness student during the day, then separate such student in the provided room and inform the parent to take the student back for primary caring and in case of not getting better, then shall take the student to see a doctor

## Practical guideline when Cluster was found in the school



## 1+5 Main Measures

### After the relief of measures on the prevention of Covid-19 epidemic in the school

#### 1. Social Distancing

Normally provides the spaces  
by keeping distances as most as possible

#### 2. Screening

Measures a fever/ observes the symptoms/  
inquires the risk background of everybody  
before entering the school

#### 3. Mask

Wears a cloth mask or a medical mask  
all the time in the school

#### 4. Hand Wash

Frequently cleans hand with soap and water for  
20 seconds and has alcohol gel services

#### 5. Cleaning

Cleans the classroom, various areas around,  
equipment and common touched surfaces

#### 6. Reducing

Reduces grouping activities,  
avoids going crowd places



(Unofficial Translation)



Ministry of Education



Ministry of Public Health



<http://bit.do/schoolcovid-19-v2risk>